

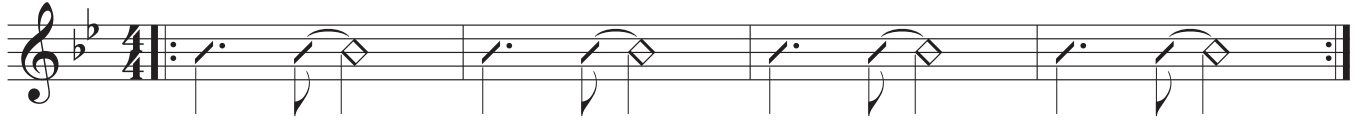
As recorded on Gather

# Gather

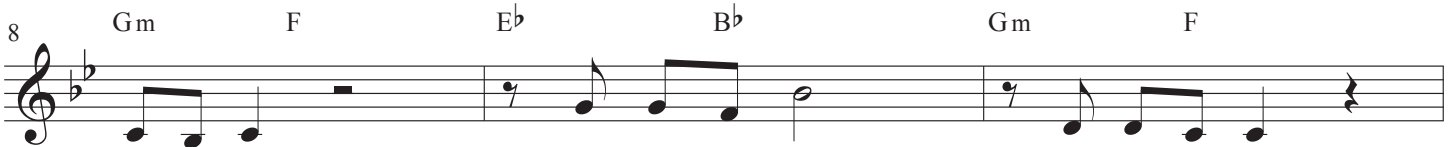
Words and Music by  
CHRISTOPHER WILLIAMS  
and JEFF PARDO

♩ = 102

E♭2 B♭ Gm7 F E♭2 B♭ Gm7 F



To be known, to feel safe. To be hon - est and



un - a - fraid. To leave the past, run in - to hope.



To find to - geth - er we are not a - lone. I need



you. You need me.



This is why we gath - er. This is why we gath - er. To re-



mem-ber why we mat - ter. This is why we gath - er.

To Coda

# Gather

25 Eb Bb Gm F Eb Bb  
To share our sto - ry, si - lence the noise. To hear the wis - dom in the

28 Gm F Eb Bb Gm F  
trem - ble of a voice. To car - ry heal - ing for all the scars.

31 Eb Bb Gm F **D.S. al Coda**  
To know we're more than our bro - ken hearts. I \_\_\_ need

33 Gm F/A Bb Cm  
When we \_\_\_ help each oth - er Fight the fear, be pre - sent with one an - oth -

37 Gm F/A Bb Cm F  
- er, We will find that's where the life \_\_\_ of God \_\_\_ is lived. \_\_\_

41 Eb Bb Gm F Eb Bb Gm F Eb Bb  
To give cour - age,

46 Gm F Eb Bb Gm F  
to hear it now. We are be - lov - ed, this is ho - ly ground. I need

50 Eb Bb Gm F Eb Bb Gm F  
you. \_\_\_ You \_\_\_ need me. \_\_\_

# Gather

54

E $\flat$  B $\flat$  Gm F E $\flat$  B $\flat$

This is why we gath - er. \_\_\_\_\_ This is why we gath - er. \_\_\_\_\_

*Choir (3rd and 4th x's only)*

Gath - er, \_ gath - er. \_

Detailed description: This system contains two staves. The top staff is a vocal line in G minor, starting with a repeat sign. It features a melody with eighth and quarter notes, and rests. Chords E $\flat$ , B $\flat$ , Gm, F, E $\flat$ , and B $\flat$  are indicated above the staff. The bottom staff is a piano accompaniment line, mostly consisting of rests, with some eighth-note accompaniment in the second and fourth measures.

57

Gm F E $\flat$  B $\flat$  Gm F

\_\_\_\_\_ To re - mem - ber why we mat - ter. \_\_\_\_\_

Gath - er, \_ gath - er. \_ Gath - er, \_ gath - er. \_

Detailed description: This system contains two staves. The top staff is a vocal line with a melody of eighth and quarter notes. Chords Gm, F, E $\flat$ , B $\flat$ , Gm, and F are indicated above the staff. The bottom staff is a piano accompaniment line with eighth-note accompaniment.

60

1, 2, 3.  
E $\flat$  B $\flat$  Gm F

This is why we gath - er. \_\_\_\_\_

Gath - er, \_ gath - er. \_

Detailed description: This system contains two staves. The top staff is a vocal line with a melody of eighth and quarter notes. Chords E $\flat$ , B $\flat$ , Gm, and F are indicated above the staff. The bottom staff is a piano accompaniment line with eighth-note accompaniment.

62

4.  
E $\flat$

This is why we gath - er, \_\_\_\_\_ gath - er, \_\_\_\_\_ gath - er. \_\_\_\_\_

Gath - er, \_ gath - er. \_

Detailed description: This system contains two staves. The top staff is a vocal line with a melody of eighth and quarter notes. A chord E $\flat$  is indicated above the staff. The bottom staff is a piano accompaniment line with eighth-note accompaniment.